



# Biocultural Diversity in the context of Human-Reptile Coexistence:

Complexity as a new Paradigm  
for Wildlife Conservation.

MIRZA D. KUSRINI

Presented at ISTAKCOS  
3/11/2020



Despite multiple attempts to locate more individuals of *B. kalimantanensis*, prior to 2007, only two specimens of this frog species were known to science.....but we were able to discover two new populations of *B. kalimantanensis* upstream of the type locality (Bickford et al. 2008)

*Barbourula kalimantanensis*





## **STANDARD METHODS**







# Photo recollection (Alma Tiara, 2020)



*Batagur affinis*



*Callagur borneoensis*



*Cyclemys dentata*



*Malayemys subtrijuga*



*Notochelys platynota*



*Siebenrockiella crassicollis*



*Heosemys spinosa*



*Cyclemys oldhamii*



*Orlitia borneensis*



*Cuora amboinensis*



*Amyda cartilaginea*



*Chelonia mydas*



# Photo recollection



*Batagur affinis*



*Callagur borneoensis*



*Cyclemys dentata*



*Malayemys subtrijuga*



*Notochelys platynota*



*Siebenrockiella crassicollis*



*Heosemys spinosa*



*Cyclemys oldhamii*



*Orlitia borneensis*



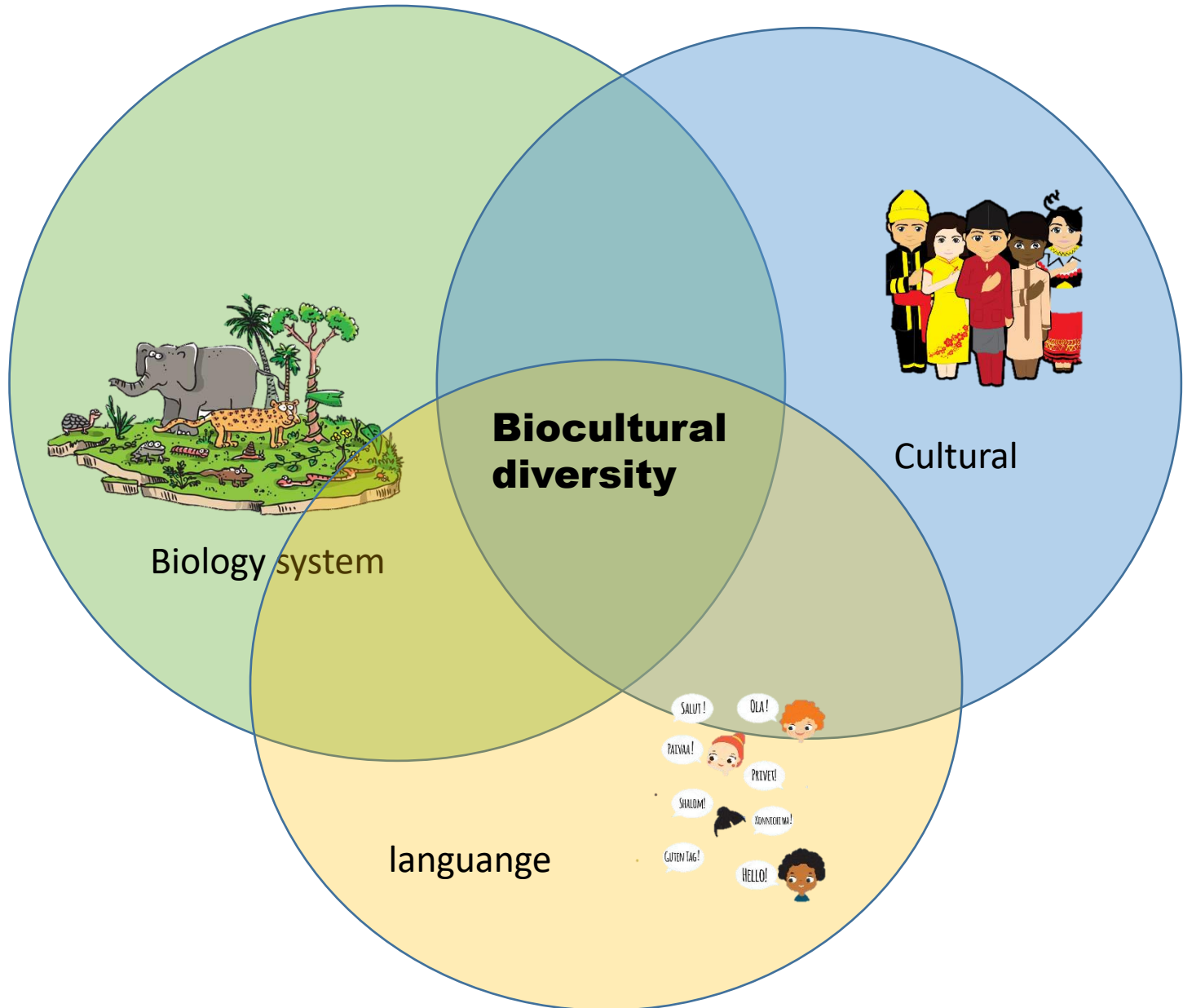
*Cuora amboinensis*

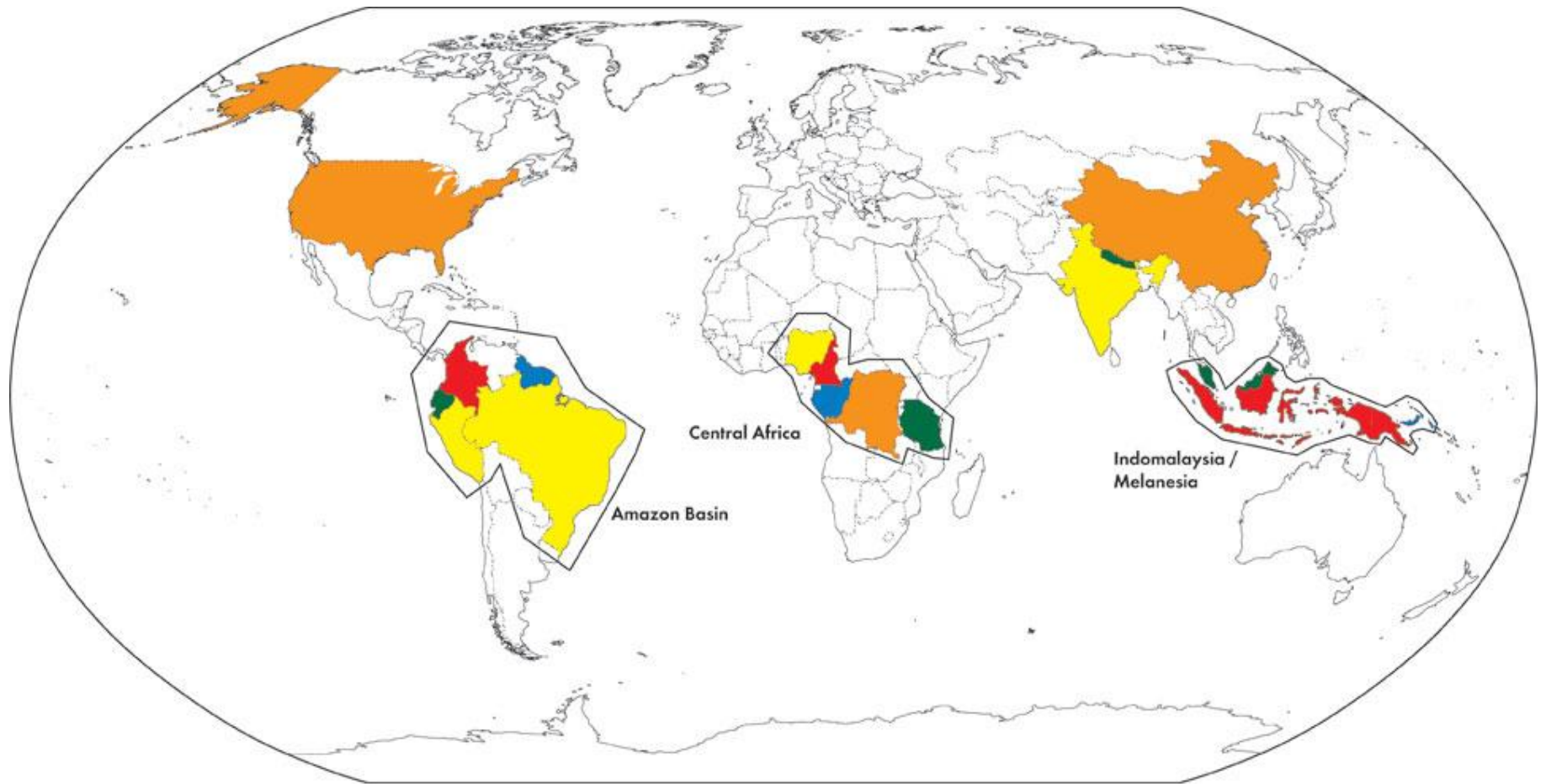


*Amyda cartilaginea*



*Chelonia mydas*





### Three Core Areas of Biocultural Diversity

- |   |  |
|---|--|
| <span style="color: red;">■</span> ranked top 10 in all three measures<br>(Colombia, Cameroon, Indonesia, Papua New Guinea) | <span style="color: green;">■</span> ranked top 10 in IBCD-AREA only<br>(Ecuador, Tanzania, Nepal, Malaysia)                           |
| <span style="color: yellow;">■</span> ranked top 10 in two of the three measures<br>(Peru, Brazil, Nigeria, India, Brunei)  | <span style="color: blue;">■</span> ranked top 10 in IBCD-POP only<br>(Guyana, Suriname, French Guiana, Gabon, Congo, Solomon Islands) |
| <span style="color: orange;">■</span> ranked top 10 in IBCD-RICH only<br>(USA, Democratic Republic of Congo, China)         |  |

*Core Areas of Biocultural Diversity as Identified by Terralingua's Index of Biocultural Diversity. Source: Original work by David Harmon and Jonathan Loh, based on Loh and Harmon (2005).*



# ETHNOBOTANY



<https://nusadaily.com/opinion/kontribusi-medikal-si-mbok-jamu-pemeliharaan-kesehatan-tubuh-ala-jawa.html>

# ETHNOZOOLOGY





<https://shopee.co.id/Roti-Buaya-Sepasang-ukuran-70-cm-untuk-berbagai-acara-Betawi-Stelete-Cake-i.55137265.913346948>



<https://www.idntimes.com/life/women/fajar-laksmi-dewi/pernikahan-adat-betawi>

Home > News > Peristiwa

## 3 Penemuan Buaya yang Hebohkan Warga Jakarta

Devira Prastiwi  
09 Okt 2019, 17:32 WIB

FACEBOOK TWITTER

TOPIK POPULER

- # KEBAKARAN KEJAKSAAN AGUNG
- # GUS NUR
- # COVID-19
- # LGBT
- # GEMPA HARI INI

JADWAL ACARA HARI INI

**SCTV** **INDONESIA**

**LIVE** Status Selebritis

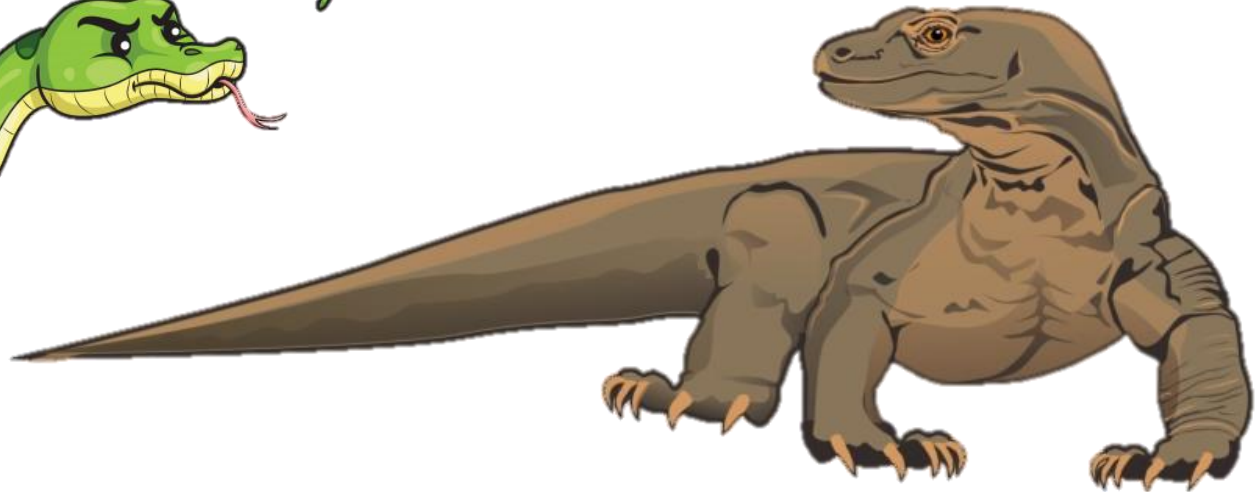
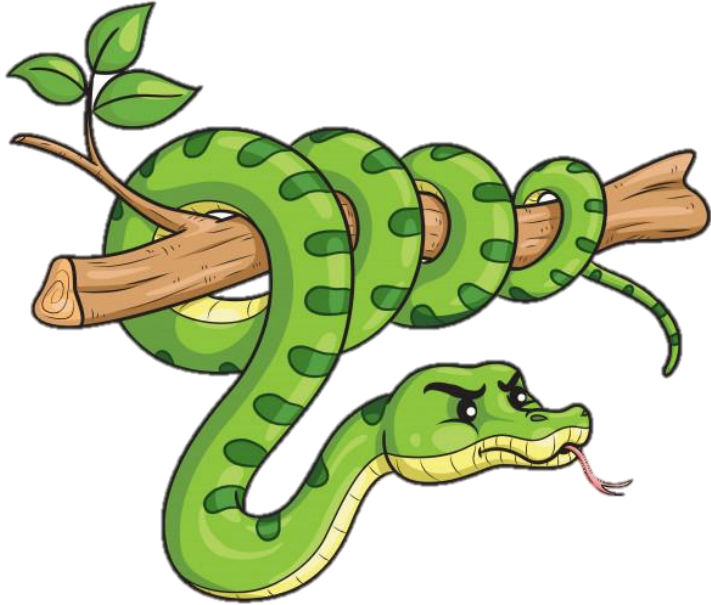
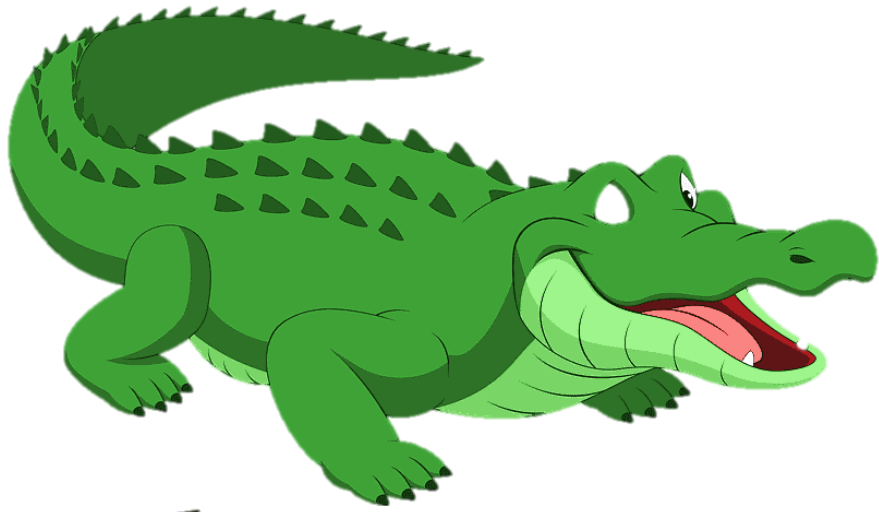
**08:00** FTV Pagi Spesial

## Metropolitan Waspada buaya yang semakin betah di Jakarta

Oleh Roy Rosa Bachtiar © Minggu, 14 Oktober 2018 21:09 WIB

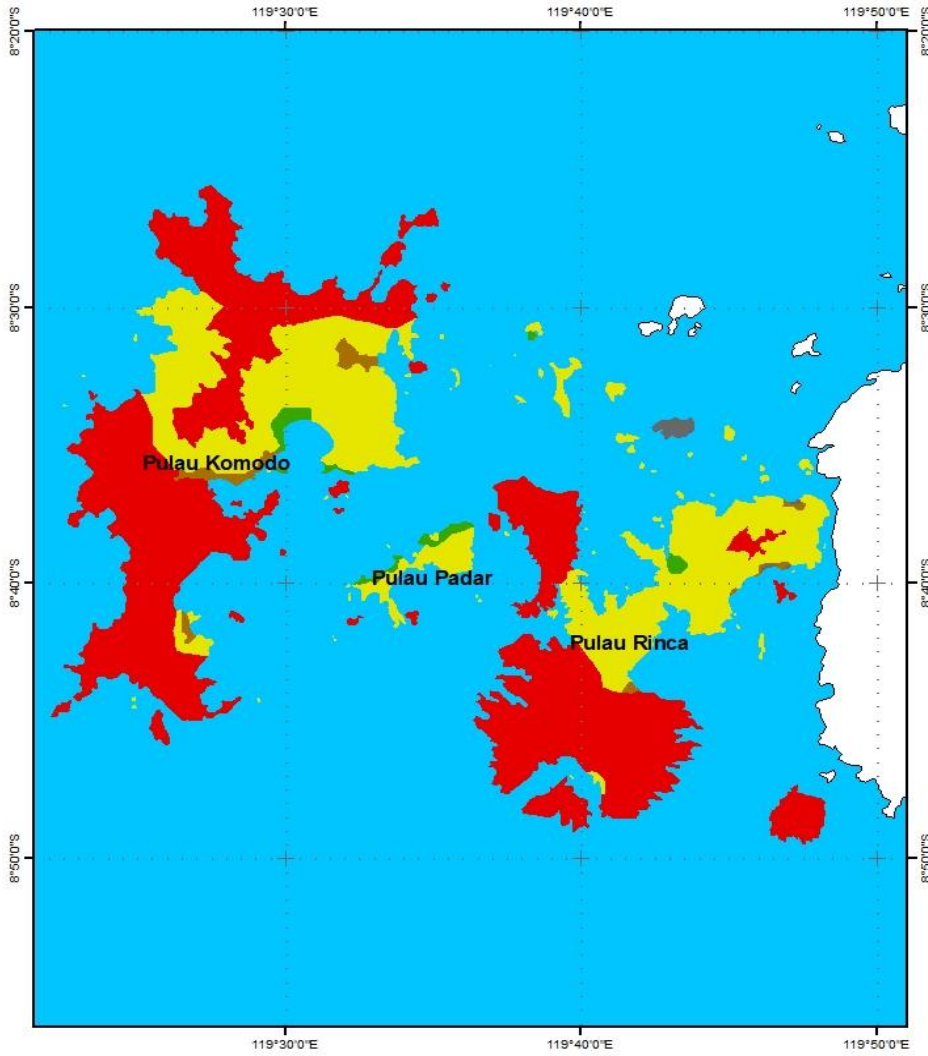




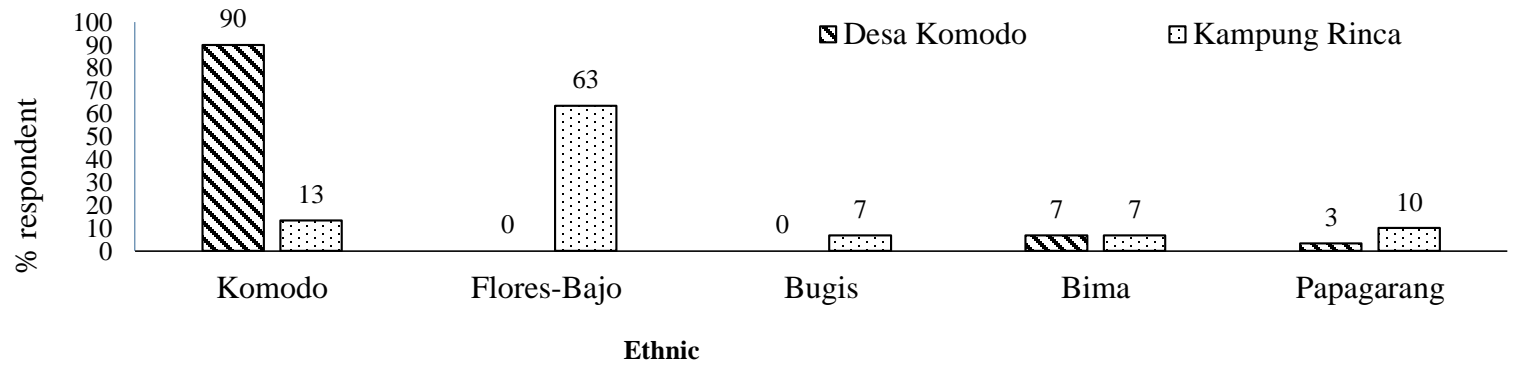


# Interaksi Manusia dan Reptil Berbahaya di Taman Nasional Komodo Provinsi Nusa Tenggara Timur (Ramadhani 2018)

*Human - Dangerous Reptiles Interactions in Komodo National Park, Nusa Tenggara Timur*







*Varanus Komodoensis*

*Naja sputatrix*

*Trimeresurus insularis*

*Trimeresurus albolabris*

*Daboia siamensis*

*Crocodylus porosus*

*Varanus salvator*

# DANGEROUS REPTILES

# DANGEROUS REPTILES

---



*Varanus  
Komodoensis*



*Naja  
sputatrix*



*Trimeresurus  
insularis*



*Daboia  
siamensis*







# Desa Komodo

Kakabotek

(kaka = snake; botek =  
weathered sarong)

- the incarnation of a human who wants to take revenge on her stepmother. Women are cursed if they were bitten as they will immediately die.
- ***Avoid this snake, do not kill***

## **Kampung Rinca**

***Kill the snake whenever it was found***

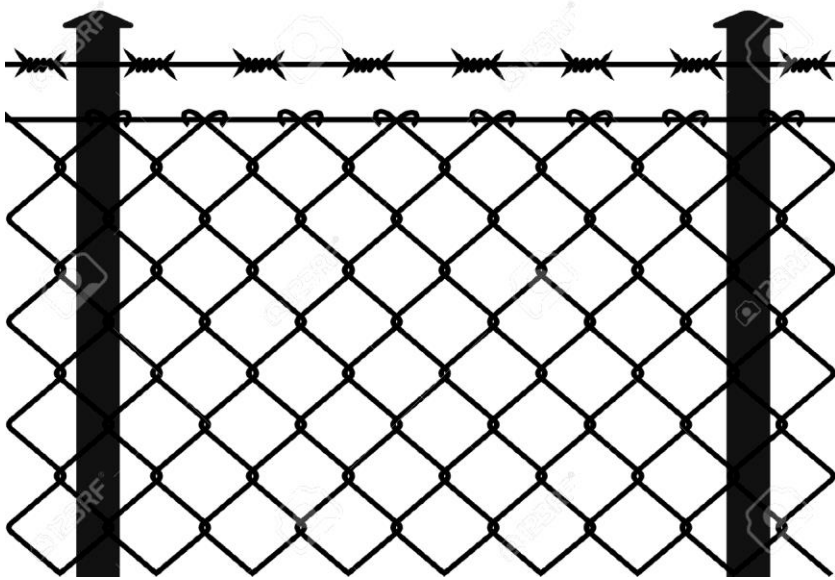


# Desa Komodo

Ora

- Twin son of head chief, Umpu Najo.
- One born as human, the other as dragon (komodo) who choose to live in the forest.
- If one of Ora is hurt, its human family will also be hurt.





**Should we fence the village so komodo won't come?**

## **Desa Komodo**

Mostly disagree although number of Komodo coming to village is higher than in Rinca



Kampung Rinca





# Conservation of wildlife

- Complex issue
- It is not only talking about population or other biological variables
- Wildlife conservation manager need to account relationship between local people and wildlife
- Healthy co-existence depends on knowledge and willingness of local people to maintain its cultural heritage

tiba teing

**Terimakasih**

Hatur nuhun

teurimong geunaseh

makaseh

dangke

Matur suksma

matur nuwun

**Thank You**